

HANDRAIL INSTALLATION INSTRUCTIONS

Secure your way with our ADA approved handrail systems

Our handrails are designed with elegance in mind while delivering safety and security to any application they are used for.

Easy-to-install (tools required) and customizable to any length.

Grab hold of some peace of mind now.



IMPORTANT: Before starting your Mountwest handrail project, please ensure to check your local building codes and building permit requirements prior to installation. Building codes may vary. Always comply with all applicable building codes. Please check areas to be drilled are free from utilities, services, and hazards.

NOTE: Affixing handrail brackets to the wall is a critical part of ensuring the strength of your handrail system. Please use adequate fasteners that meet or exceed the minimum requirement for weight load of handrail.

Failure to follow these instructions could result in serious injury or death!

No member of Mountwest Building Supplies Ltd., or the Dealer shall be liable for any loss or damage resulting from the improper installation or use of this product.

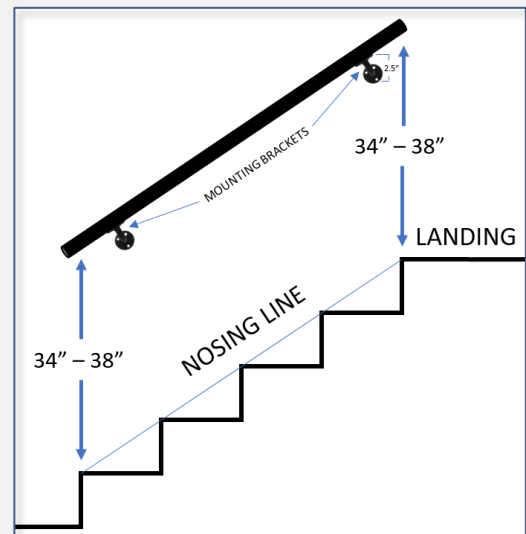
Step 1. GETTING STARTED

Remove all components from their packaging

- Determine length of handrail required by measuring stair length (nosing line) from the nose of the bottom tread to the nose of the landing and cut to length if necessary. *If joining multiple handrails together keep in mind a wall mount should be placed within 6" on either side of any joint.

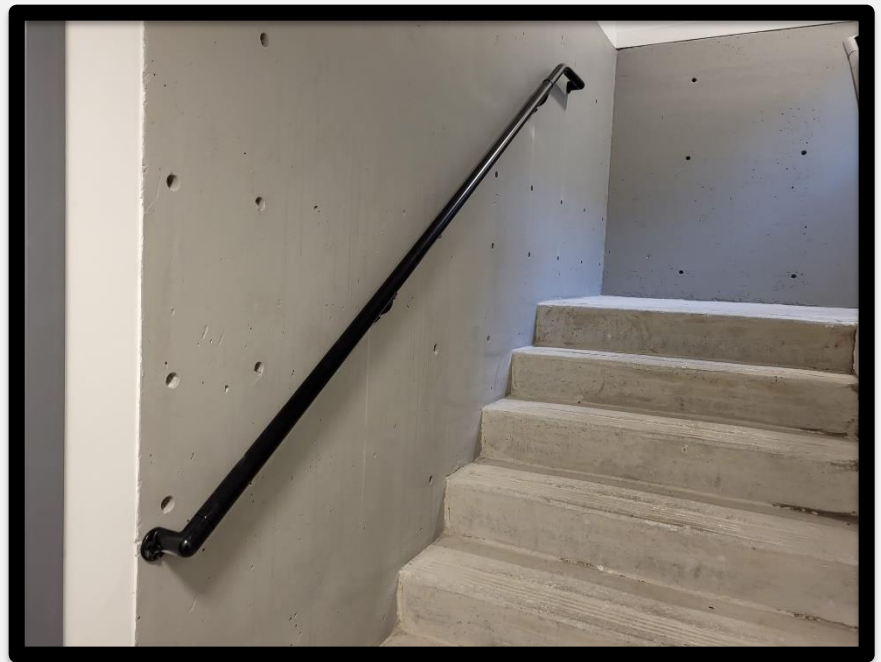
Step 2. FINDING YOUR MEASUREMENTS

- Measure up 34" – 38" on a level line from the nose of the **top** of the landing where your handrail will sit and make a mark on the wall. Then, using the same measurement as above (34" – 38") measure up on a level line from the nose of the **bottom** tread and make a mark on the wall. This will now give you your handrail line and if measured correctly, should share the same degree as your stairs.
- Now find where you would like to mount the wall brackets. Ideally, the wall brackets should be mounted to a stud, but if there are none available dry wall anchors will suffice.
- It is recommended that the mounting brackets are attached within 6" from the ends of the handrail.
- Once your mounting locations are determined, measure 2.5" down from your handrail line and mark the wall – this will be the bottom mounting hole for the wall bracket. **Repeat steps for all wall brackets.**



Step 3. MOUNTING YOUR HANDRAIL

- It is time to mount your handrail. Starting from the **top**, angle the mounting bracket to the degree of the *handrail line* and secure the bracket using only the bottom hole first (this allows angle adjustment if needed).
- Find the desired location and fasten the handrail to the **top** mounting bracket with the screws provided.
- Pivot the handrail up to match the *handrail mounting line* (assistance may be required for longer lengths).
- Rest the handrail upon the bottom mounting bracket and hold the bracket on the wall while lining up the bottom mounting hole to the *wall mark* previously measured.
- If your desired handrail angle is achieved, mount the bottom bracket with the appropriate fasteners and then fasten the handrail to the bracket. *If your angle is not achieved, slight adjustments may be required.
- Proceed to complete the mounting of the top bracket.
- If there are additional mounting brackets required along the handrail length, fasten brackets to handrail first and then mount the brackets to wall.



Step 4. CAPPING YOUR HANDRAIL

- To complete your handrail installation, use the provided rail end caps to close off your handrail. The rail end caps should fit firmly into the ends of your handrail. If you find that your end caps are slightly loose, we recommend applying a small amount of superglue to the outer sleeve of the caps to hold them securely in the handrails.
- If you are installing **90° wall returns** to terminate your handrail, simply insert the wall return into the handrail and fasten the wall return bracket to the wall. Use a self-tapping screw to secure the wall return bracket to the handrail, making sure the screw penetrates the sleeve of the wall return bracket.



INSTALLING LEVELLING ELBOWS

- To level out your handrail for a straight run or increase the handrail return at the top and/or bottom of the landings, find the degree of your stairs and install the associated elbow to that degree (i.e., if your stairs are 31.5 degrees, use our **31° elbow** for the best results. *See the following section for connecting the elbows to your handrail.



JOINING ELBOWS AND HANDRAIL LENGTHS

- To join multiple handrail lengths and elbows, slide the splicer halfway into the first handrail length.
- Use one self-tapping screw to secure the splicer to the first handrail length. Screw into a location as close to the joining face as possible but leaving room for the collar to fit (at least 1/4" from joining face) *Be sure to position the internal splicer so that the screw penetrates it and is **not** in line with the open channel.
- Next, fit the collar over the splicer and onto the first handrail length. Then slide the second handrail length or elbow over the splicer and into the collar.
- Be sure the handrail lengths are held firmly together and proceed to screw the second length securing it to the internal splicer. *Tip: Align the screws so that when mounting the handrail onto the wall, they can be easily hidden and out of sight.



MOUNTWEST

BUILDING SUPPLIES LTD

TOOLS & MATERIALS REQUIRED/RECOMMENDED:

- Handsaw (Aluminum Hacksaw) or Mitre Saw with Non-Ferrous Metal Cutting Blade
 - Electric Drill
 - 3/8" and 5/16" Socket Bits
 - #2 Robertson bit (for self-tapping screws)
 - Stud Finder
 - Measuring Tape, Level, Pencil
 - Super Glue (optional)
- Degree Finder (smartphone app download - optional)

IMPORTANT: Before beginning your handrail project, be sure that there is substantial backing behind your mounting wall to secure your brackets to and check with your local building codes to determine proper installation.